

Sustainable by design, restorative by nature

Chris Larsen

atNorth, Chief Technology Officer

Janne Sigurdsson atNorth, Chief Sustainability and Compliance Officer

October 2025



The background of the slide is a high-angle, aerial photograph of a vast, snow-covered mountain range. A dark, winding road or path cuts through the white landscape, leading towards the distant peaks. The sky is a deep blue with some light, wispy clouds. The overall tone is serene and expansive.

atNorth Vision

More compute for a better world

Founded on **sustainability** and innovation, atNorth powers the world's most demanding workloads.

We are the leading operator of data center infrastructure in the Nordics and the **decarbonization partner of choice**.

The background of the slide is an aerial photograph of a vast, snow-covered mountain range. A dark, winding road or path cuts through the white landscape, leading towards the distant peaks. The sky is a deep blue with some light clouds. In the top left corner, there is a small green circle.

atNorth Mission

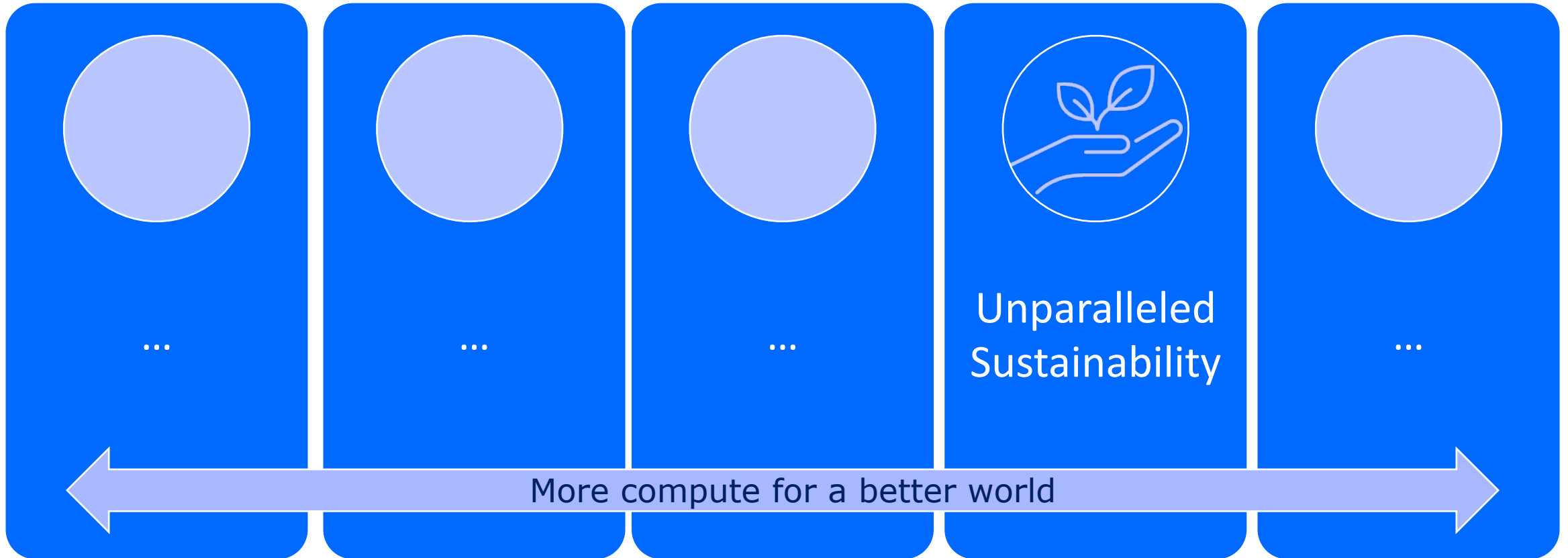
More compute for a better world

We are a disruptive force pushing boundaries to bring unmatched efficiency and performance to our customers

Sustainability and social responsibility lie at the core of what we do and extend to all corners of our business

atNorth Strategic pillars

Each pillar is assigned to an Executive Officer and a Board member. Annually OKRs are assigned and followed through



 **atnorth**
DATA CENTER
FORUM
CHANGEMAKERS

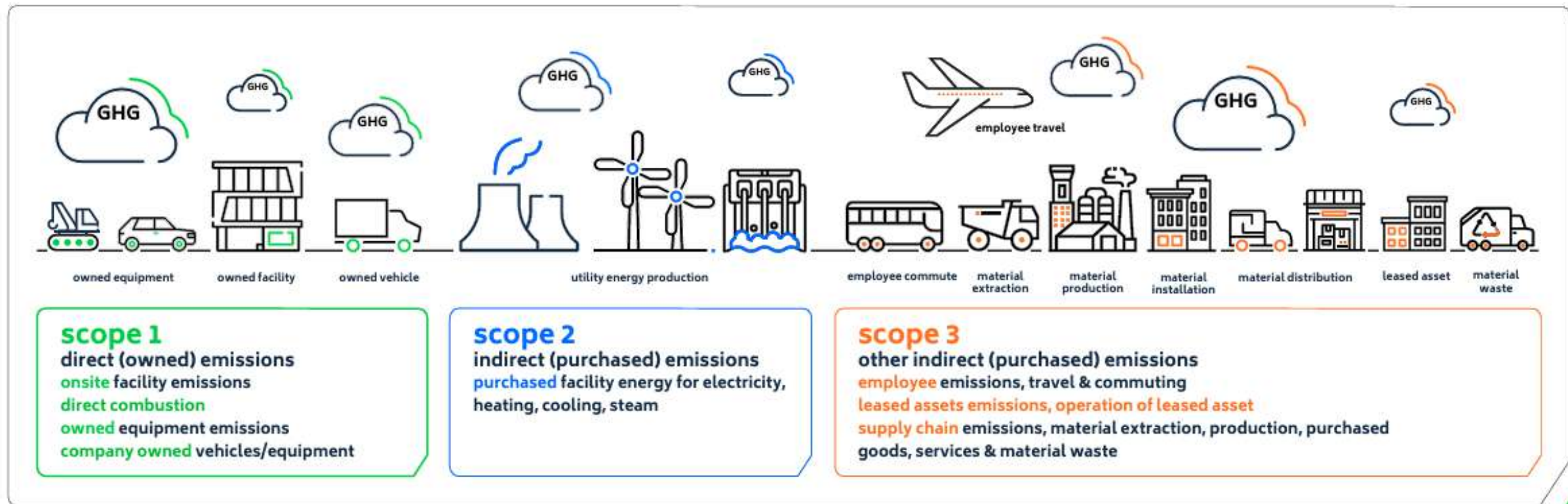
NOKIA

Marika Mentula

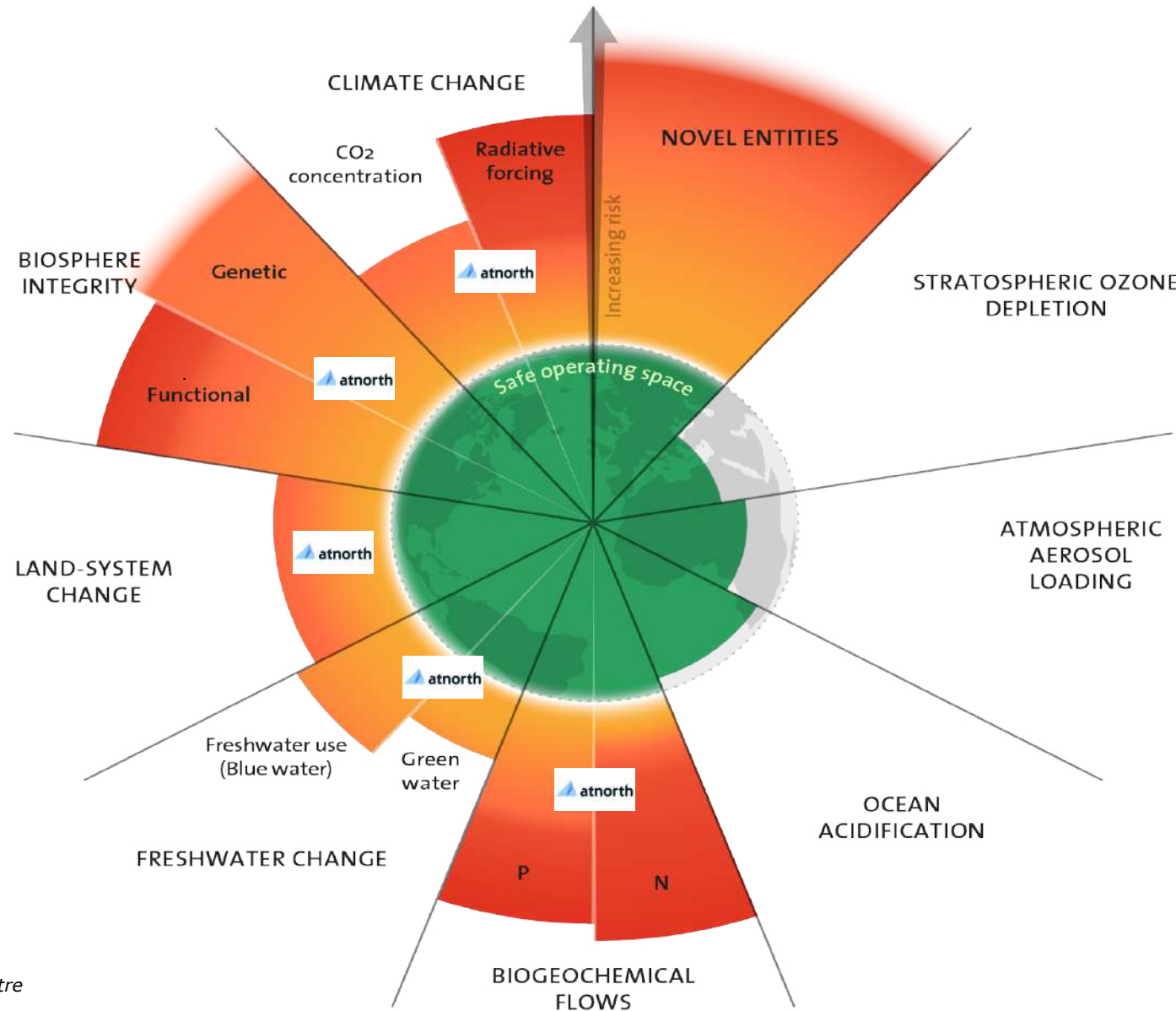
**VP Network Infrastructure Business,
Northern Europe & Vodafone, Nokia**

Net zero data center is a firm target for atNorth

Emitting no more greenhouse gases (GHGs) to the Earth's atmosphere, than what we remove

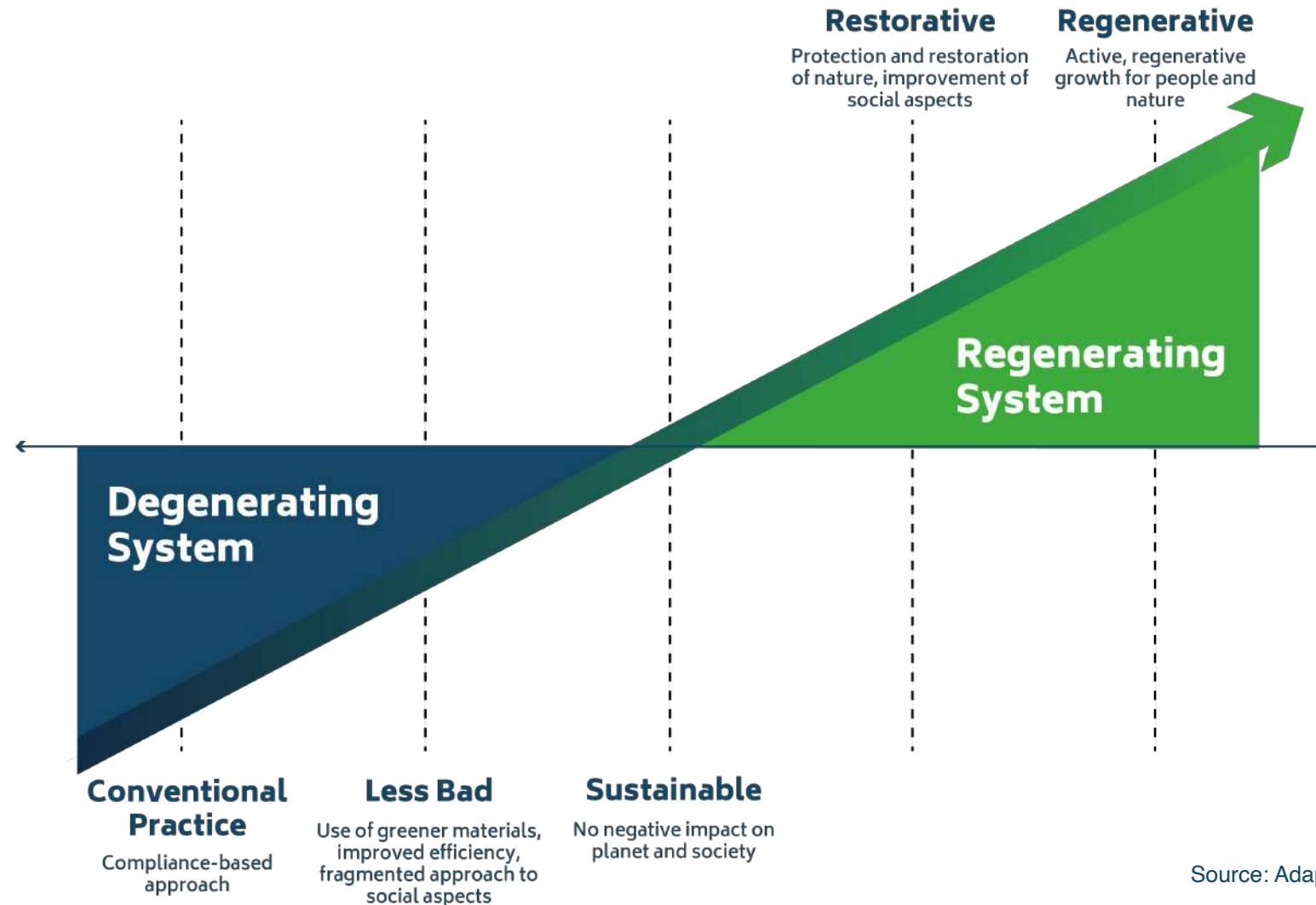


State of the planet: Net zero is simply not enough



Sustainable and Regenerative

Becoming sustainable is not enough – We must explore and prioritize regenerative impacts



Source: Adapted from Bill Reed, 2027

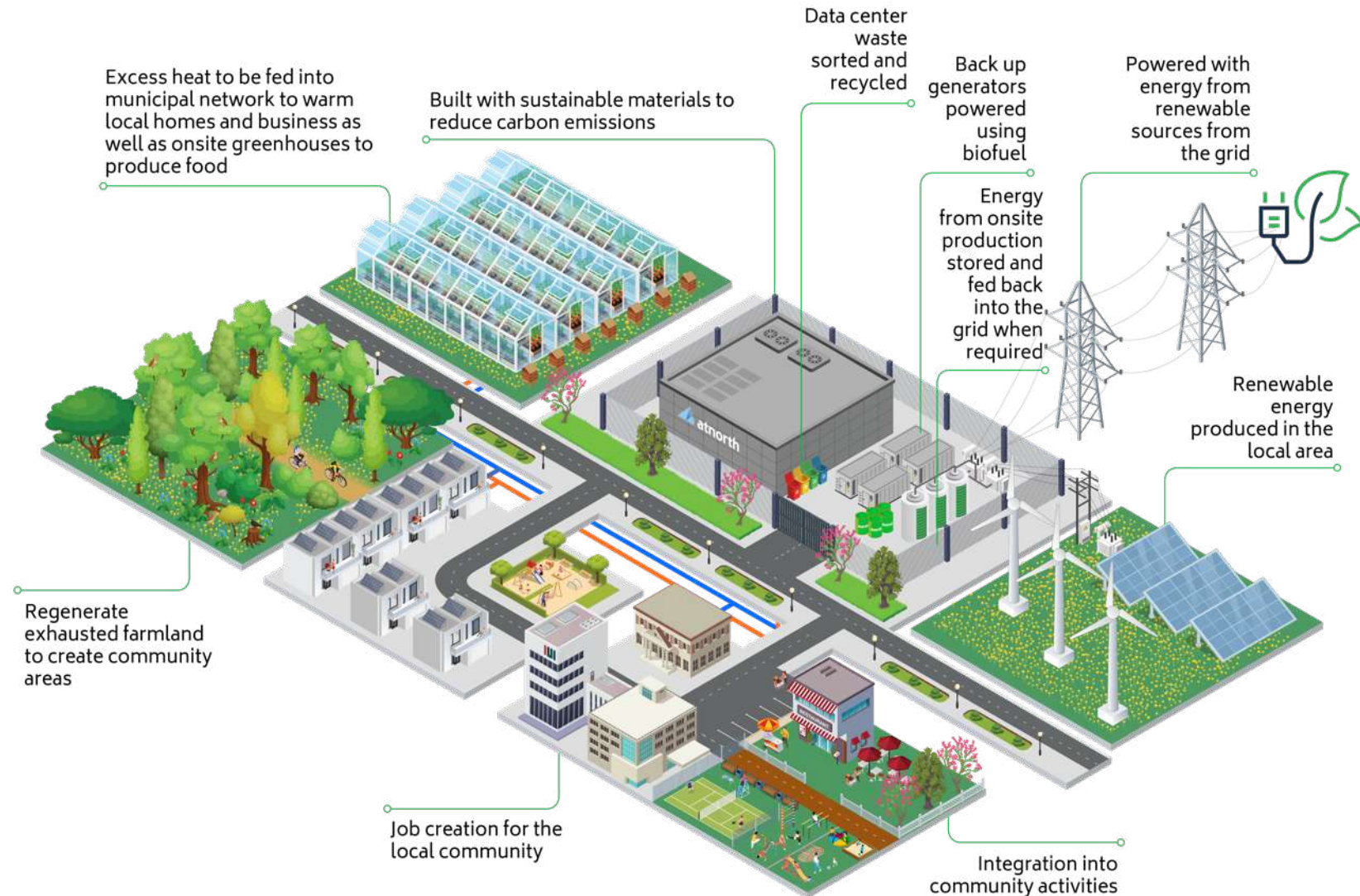


Blueprint for a net zero GHG emissions data center



atNorth's data center blueprint for the future

Becoming truly Sustainable and Regenerative



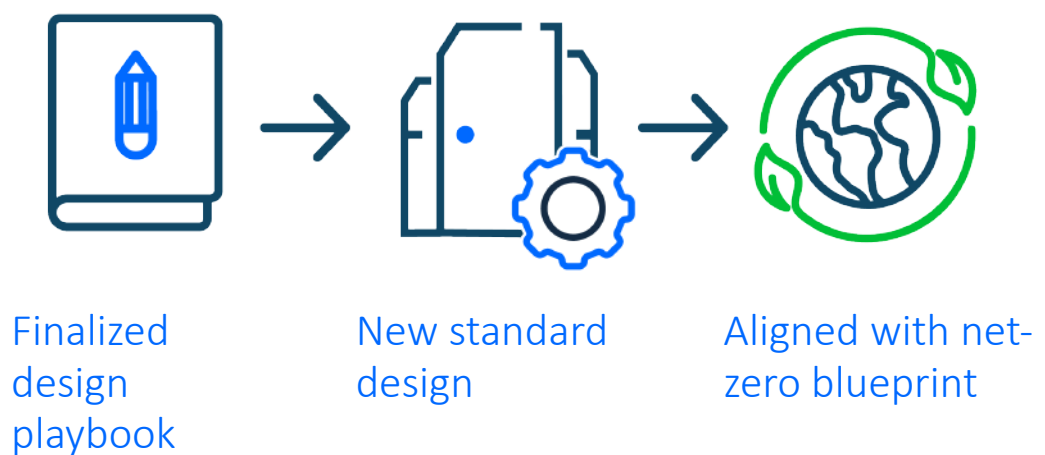
Net zero emissions data center strategy

The legal landscape

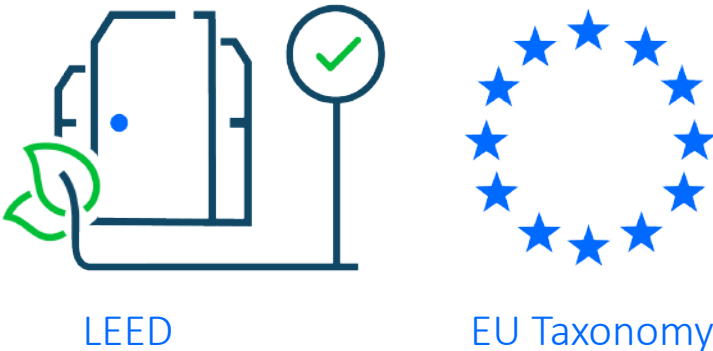


Net Zero emissions data center strategy

New standard design detailed out in Playbook



New standard design



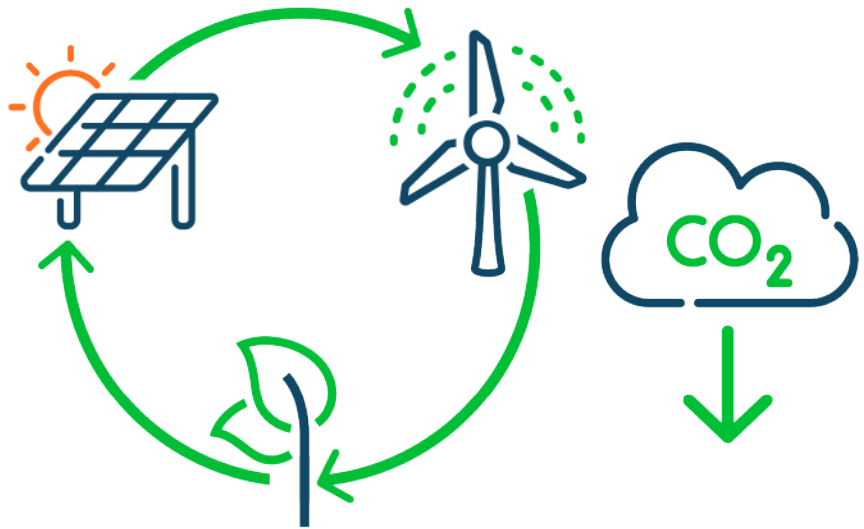
LEED and EU Taxonomy alignment

New standard design



Beyond net zero DC design for energy and GHG emissions

Carbon free/renewable energy



Renewable energy sources

Enables reduced GHG, i.e. CO₂ emissions

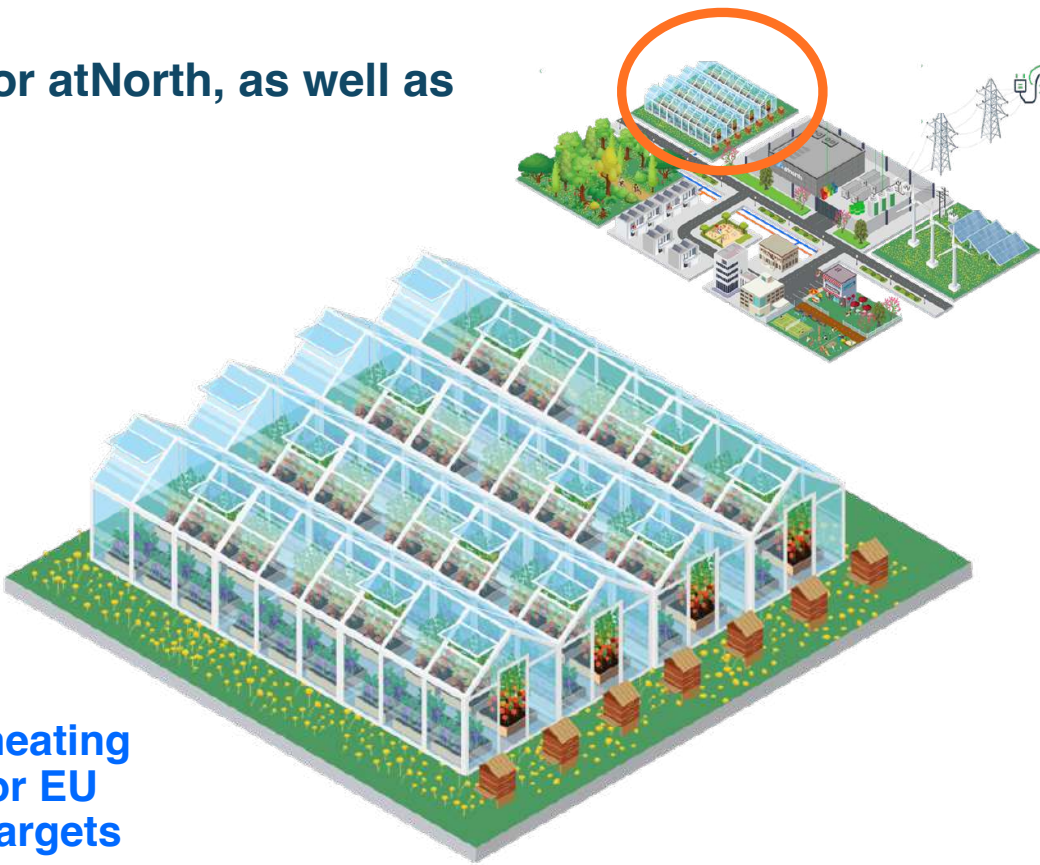
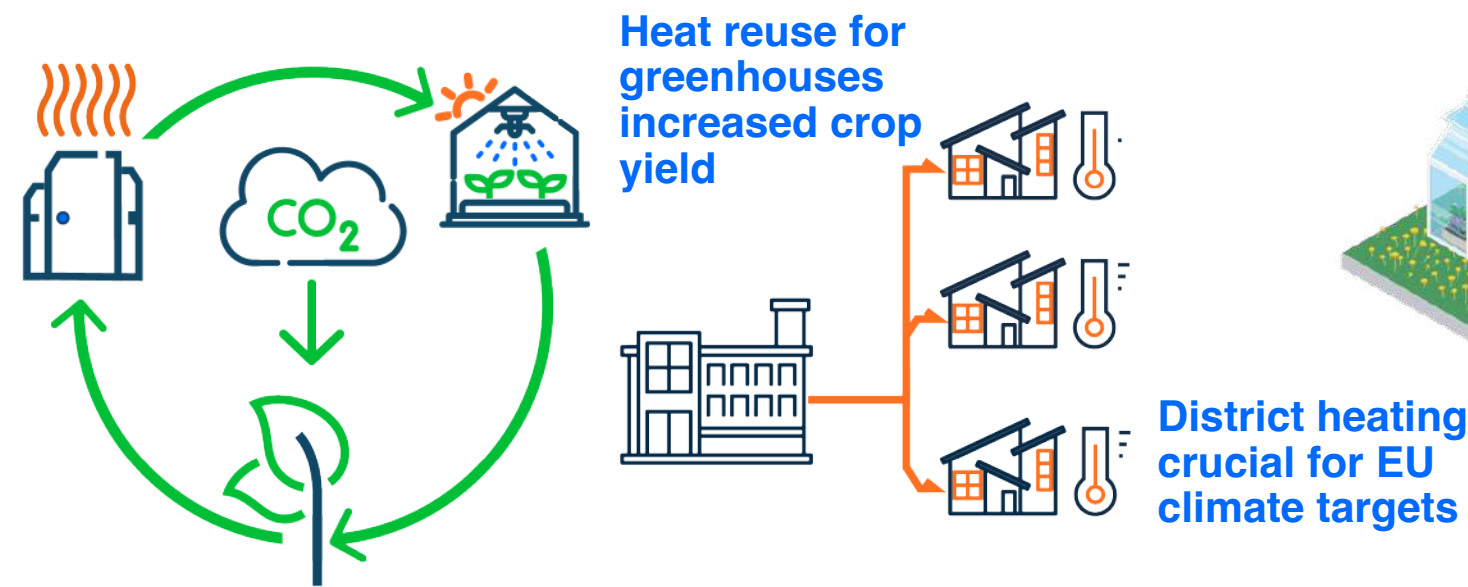
All atNorth data centers are powered by renewable energy sources.

Leveraging the Nordic region's surplus of green energy



Beyond net zero DC design for energy and GHG emissions – for atNorth, as well as community

Circular energy economy - example



Circular economy through Heat reuse

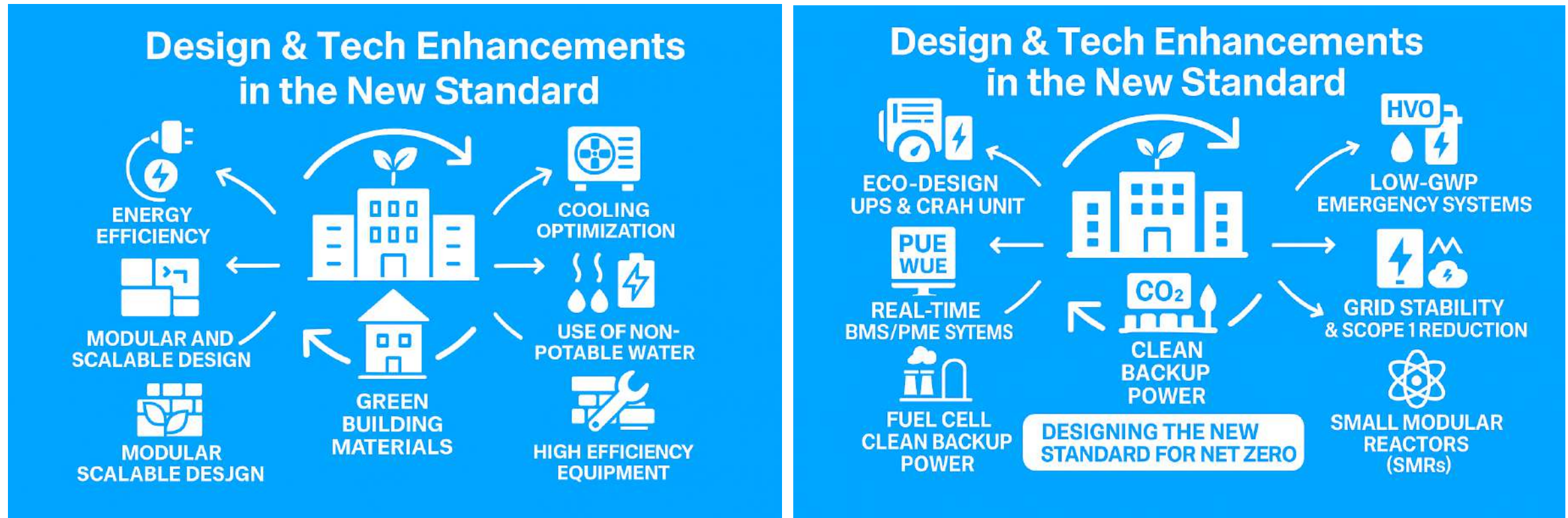
Retrofitting existing sites: Agreements made with partners for heat reuse **in existing operational sites**

New builds – from start: Heat reuse systems integrated into **all new builds**, a natural part of choosing new sites!



Towards net zero DC design

Focus: Next-Level Innovation - energy efficiency and reducing emissions



Next-Level of Innovation: Design & Tech Enhancements in new atNorth standard



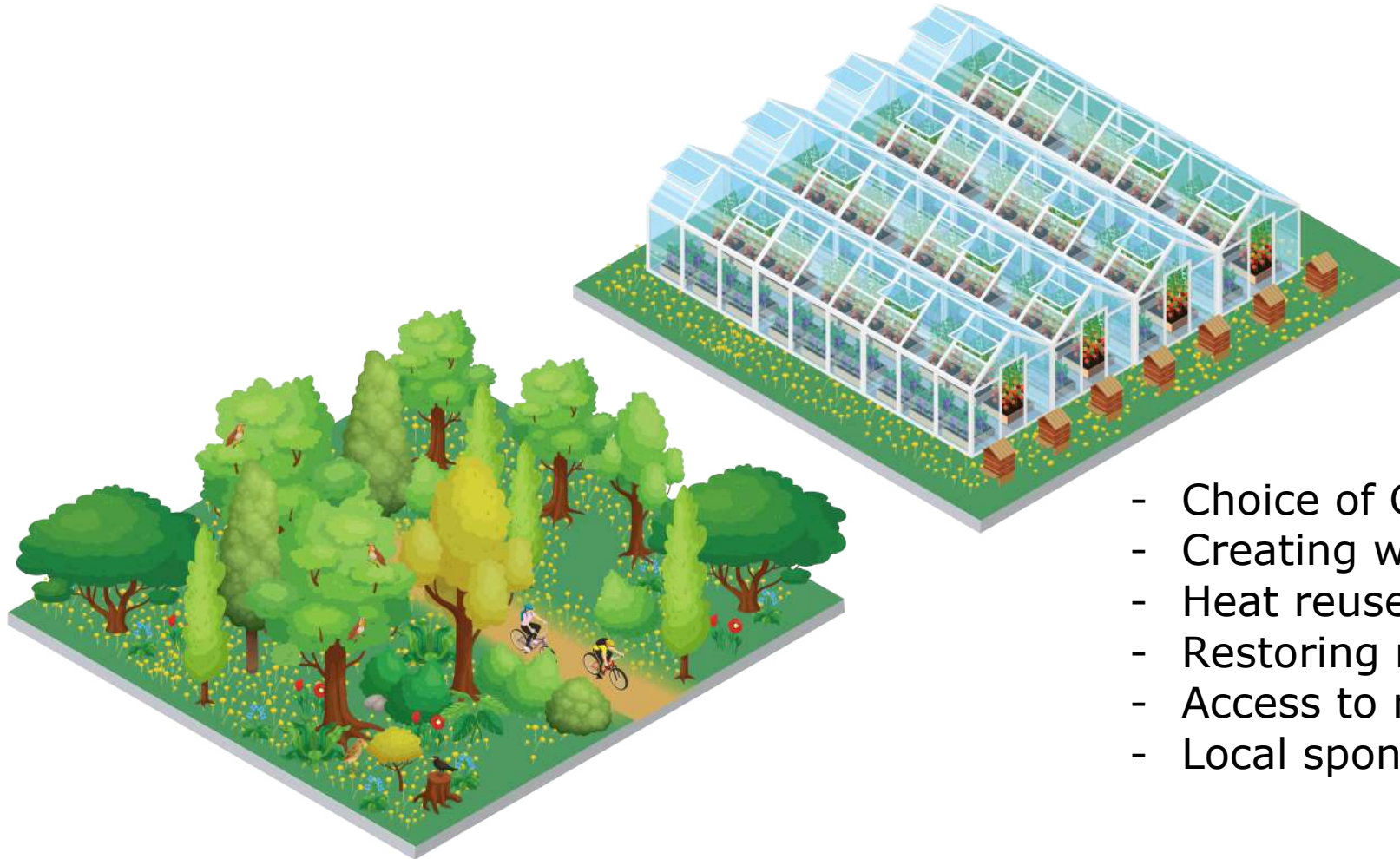
An aerial photograph of a river delta, showing a complex network of water channels and sediment bars. The water is a deep blue, and the sediment is a lighter, sandy brown. The text "Community engagement" is overlaid in white, bold, sans-serif font on the left side of the image.

Community engagement



Adding value to local communities

atNorth wants to be part of the local community and impact positively



- Choice of General Contractors
- Creating work places
- Heat reuse
- Restoring nature
- Access to restored nature
- Local sponsoring initiatives



Our core pillars for community engagement

Each pillar supports meaningful engagement through collaboration and contribution

Projects and activities aligned with planetary boundaries

Nature

Restoring ecosystems & supporting nature-positive actions



Climate change

Promoting renewable energy adoption (e.g., heat reuse) and supporting energy efficiency



Projects and activities aligned with social foundations

Mental and physical wellness

Encouraging active lifestyles & mental well-being through community connection



Education and innovation

Fostering local development, through education, collaboration and entrepreneurship



Gender equality, social equity and inclusion

Ensuring fair opportunities & fostering inclusive communities through targeted initiatives



An aerial photograph of a river delta, showing a complex network of channels and islands. The water is a deep blue, and the land is a lighter, sandy brown. The text "Nature restoration" is overlaid in white, bold, sans-serif font on the left side of the image.

Nature restoration



Future Varde site – pilot for nature restoration

Establishing leadership: 40% of the land allocated to nature



- Six solar **powered insect monitors** installed
- **Restoration** efforts to be discussed with biologists to ensure proper flora and fauna is implemented
- Nature life-cycle framework under development



An aerial photograph of a river delta, showing a complex network of channels and distributaries. The water is a deep blue, and the land is a lighter, sandy brown. The text "In conclusion..." is overlaid in white, sans-serif font on the left side of the image.

In conclusion...



atNorth has Sustainability & Regeneration deep in the DNA

Net zero GHG emission is not sufficient – and Sustainability is more than GHG

1. **GHG** emission must have high focus – also for **partners and communities**
2. The planet needs us to **learn from each other** – broader than GHG emission
3. **Regulations and reporting** are important – but actions for improvements may not go into shadows
4. Scope 1 & 2 are important – let's stretch into **Scope 3** ... and beyond
5. **Community engagement** is vital for positive contributions
6. Sustainability is not only for **Sustainability teams**



An aerial photograph of a river delta, showing a complex network of blue water channels and brown, sandy land. The text "Thank you" is centered over the image.

Thank you

