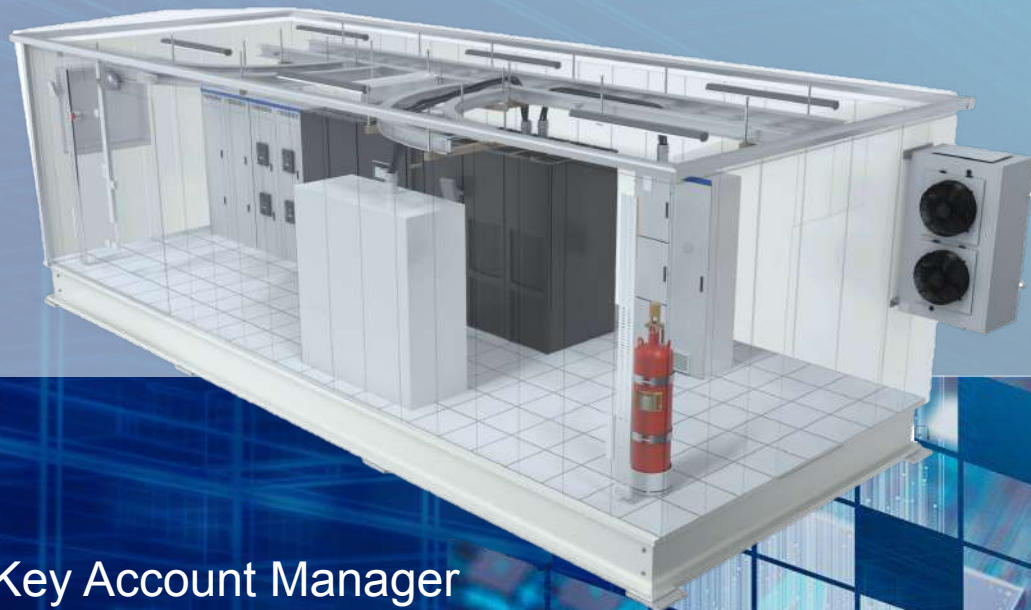


Modular power for the AI era



Marcelo Pizzato, Key Account Manager
Eaton EMEA
December 2025 - Datacenter Forum, Stockholm



Energy fuels data - data fuels AI

TODAY global data center
power demand

61.5GW*

AI Applications



Machine
learning (ML)
Deep learning
(DL)



Inference
AI



Training
AI



Edge AI
and IoT



Generative
AI



Healthcare
AI

Non-AI Applications



Large Scale
Scientific
Simulations



Gaming



Autonomous
Systems



Blockchain

By 2030 power
demand increases to

219 GW**

of which **70%** of will be
driven by AI applications

*Source: [8 Trends That Will Shape the Data Center Industry In 2025 | Data Center Frontier](#)

**Source: [AI data center growth: Meeting the demand | McKinsey](#)

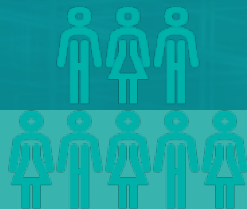
Time to market constraints

AI-driven demand



Rapid expansion and upgrades needed as AI drives around **70%** of new data centre capacity growth.

Supply chain & skilled labor



94% of data center operators report a shortage of experienced construction teams.

Access to power



The demand for power is challenging traditional energy infrastructure resulting in more regulations and carbon reduction pressure.

Why modular is the solution

Rapid deployment



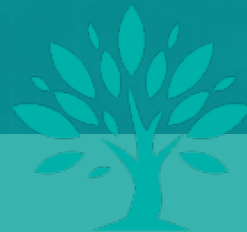
Speed project completion by up to 40% through repeatable designs and an optimized supply chain.

Supply planning & labor



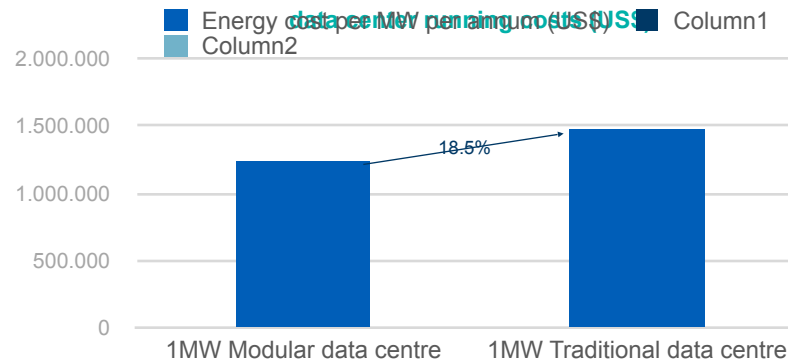
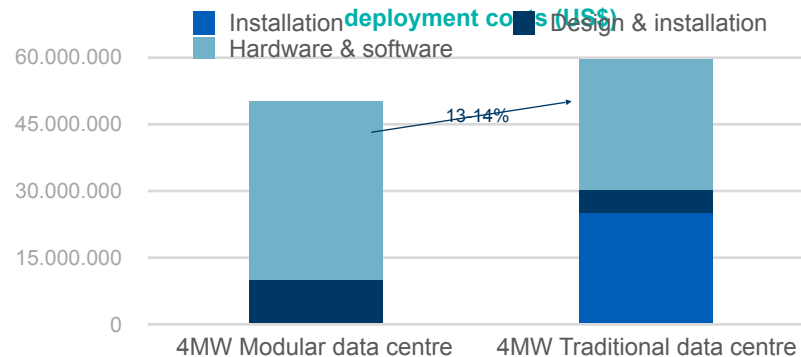
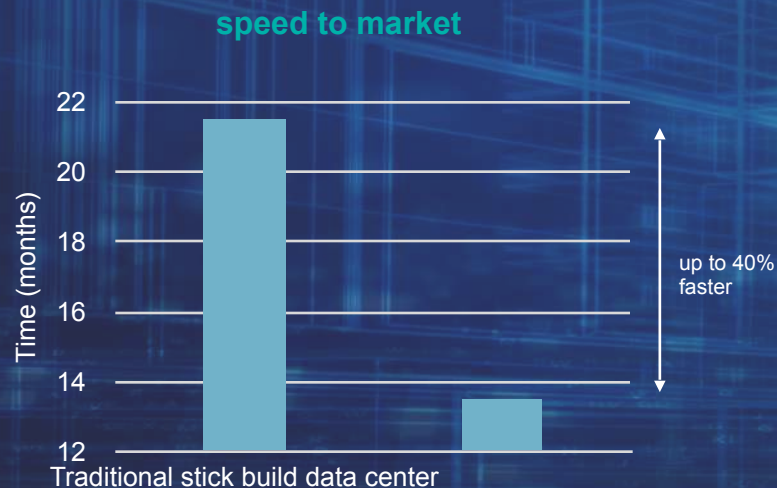
Move the work from field to factory to maximise efficiencies and minimize reliance on costly on-site expertise.

Sustainability



Lower embodied carbon components, eco-passports and certified, low impact manufacturing reduce carbon emissions

Modular vs Traditional



Source: [DCD-intelligence-modular-whitepaper](#)

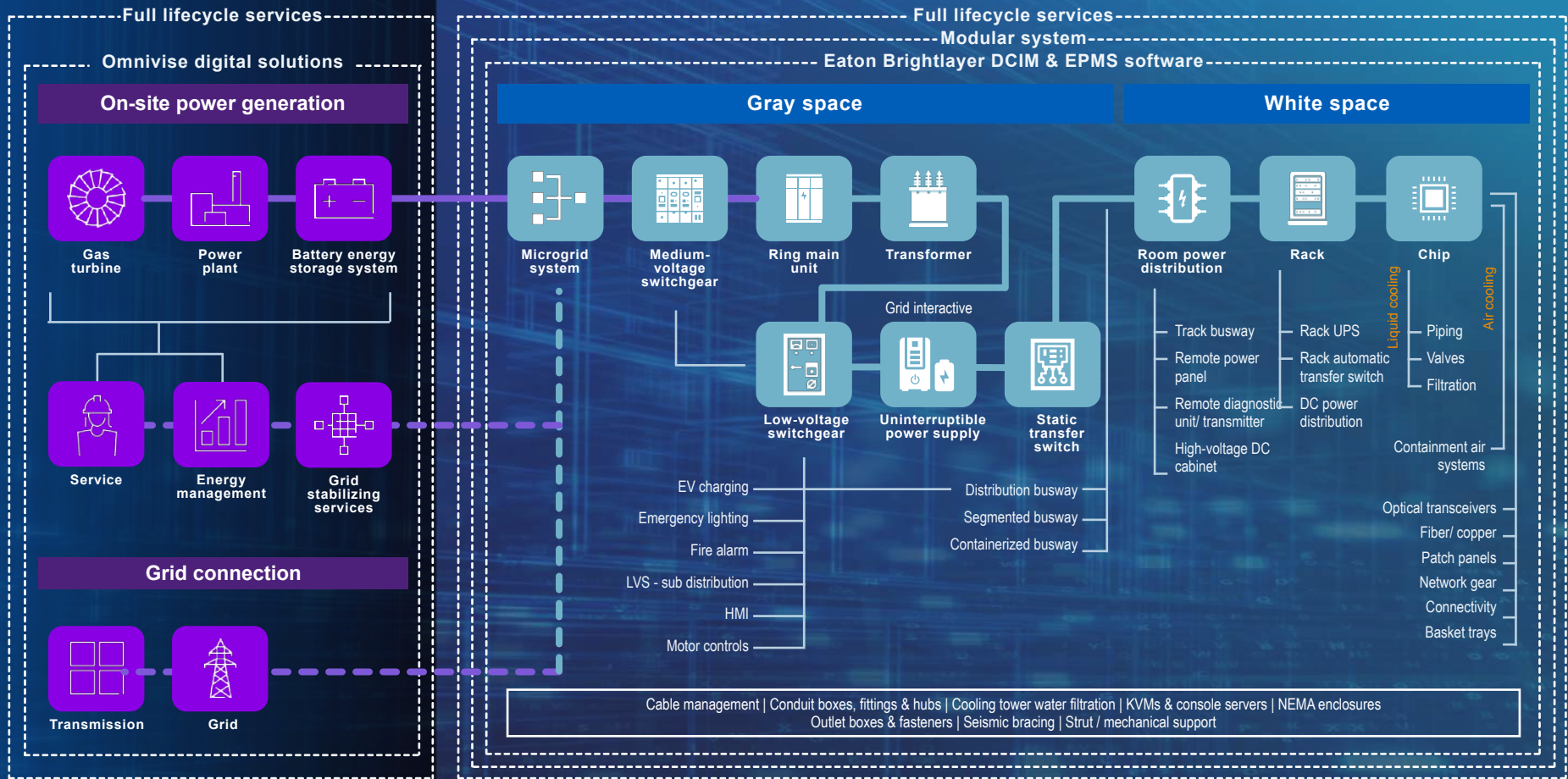
Who is Eaton?

We are a global **intelligent power management** company doing business in more than **160 countries** with annual sales of over **\$24.9 billion USD**.

- Around 94k employees
- HQ Dublin, Cleveland & Switzerland
- Data Center, Utilities, C&I



We make what matters work.*



Powering Business Worldwide

© 2025 Eaton. All rights reserved.

Siemens Energy

Eaton

Non-Eaton

Global manufacturing footprint

North America | Fibrebond | 92,000 m²

Facility in Louisiana; 3.3MVA load testing;
1500+ units delivered; UL/NEC
compliance



Cental, Ireland



Rittal, Germany



EMEA | BK Modular | 45,000 m²

Facility in UAE + satellite factories in
Qatar and KSA; modular E-House,
Skids, HAC and genset enclosures;
ISO certified



Hitech Gregfor, ZA



EMEA | NordicePOD | 12,000 m²

Facility in Norway and construction of
new factory in Portugal; flexible pod &
skid designs, ISO certified



APAC | SYT | 14,000 m²+

Across two facilities; rapid
build (80–90 modules in 10
days); packaging for export

Acquisition / Joint venture*

Integrated regional partners*

*aligned under one operating model



Powering Business Worldwide

© 2025 Eaton. All rights reserved.

xModular

Flexible Data Centre System

Introducing NordicEPOD

- Established in 2022
- Currently ~300 people employed
- Production facility area: 12.000 square meters
- Unique staged production approach on skids
- ISO certified



Benefits of NordicEPOD



Rapid deployment up to 40% faster



Pay-as-you-grow scalability



Flexible designs up to 3.1MW



Control and traceability in real time
for the entire life-cycle

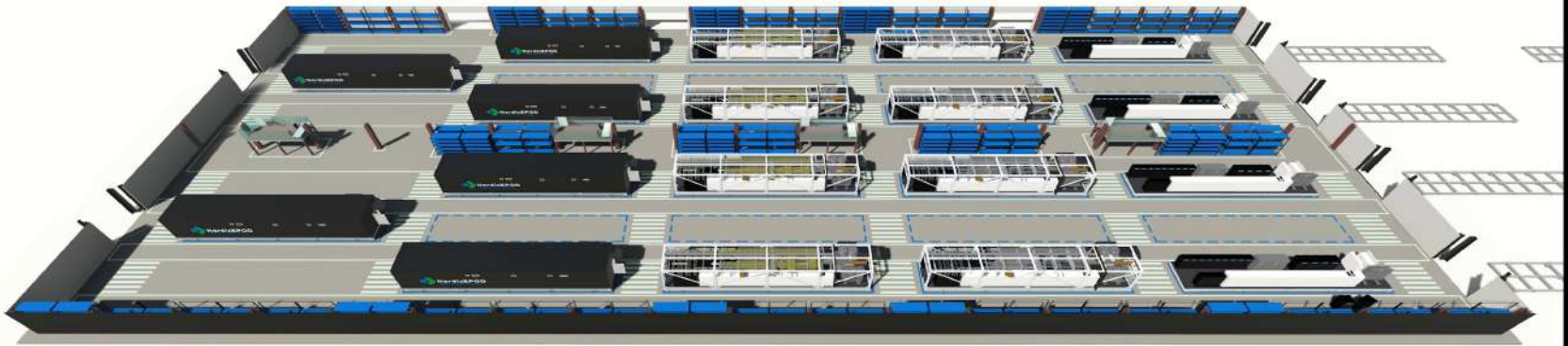


Embedded sustainability



Rapid deployment

Repeatable designs, optimized supply chain and efficient assembly line



Powering Business Worldwide

© 2025 Eaton. All rights reserved.





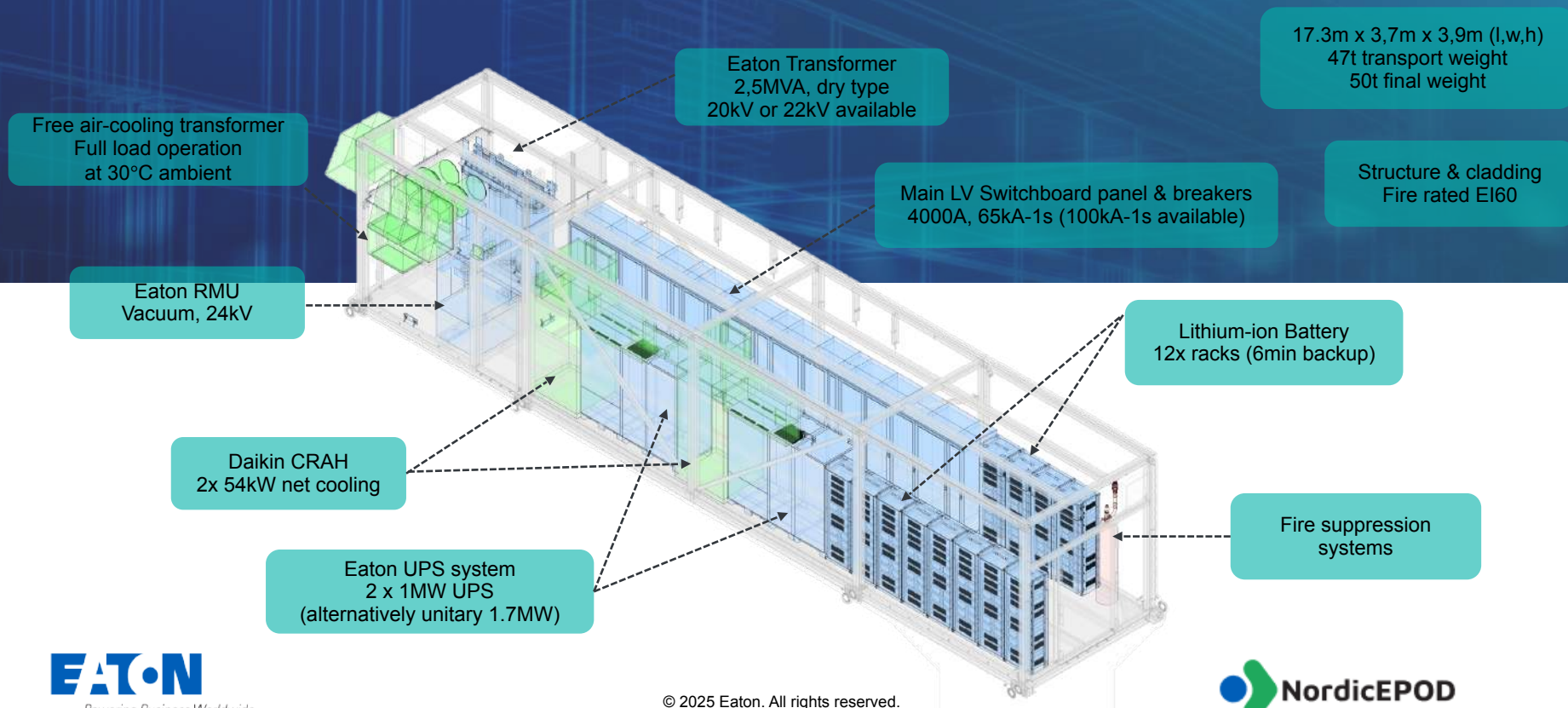
3D exploded view of a server rack system. The diagram shows a metal frame with various components labeled:

- BM RACK
- DB-EPD-UP
- DB-EPD-AUX
- Delco-CREAR Units
402 TCU-40601
402 TCU-40602
- Station Bracking
- UPD: EATON 1700WVA
402 B01
- CRAN 1440V
402 TCU-14401
402 TCU-14402
- BATTERY Circuit Breaker
- BATTERY Brack
- EATON Switchboard + Load
100 WVA
402 DB-F3001
- FAN Intake Air
- EATON Switchboard + Load
100 WVA
402 TCU-F3001
- DC BusCasing
- BATTERY Circuit Breaker
- BATTERY Brack

2.5 MW skid

E-house with transformer and switchboard / RMU

Typical power module design layout





Full lifecycle control and traceability



**Remote
Testing**



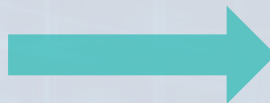
**Digital
Passport**



**Fully
Monitored**



Customer portal



Partner systems



Delivery
data



Pod
data



Production
data

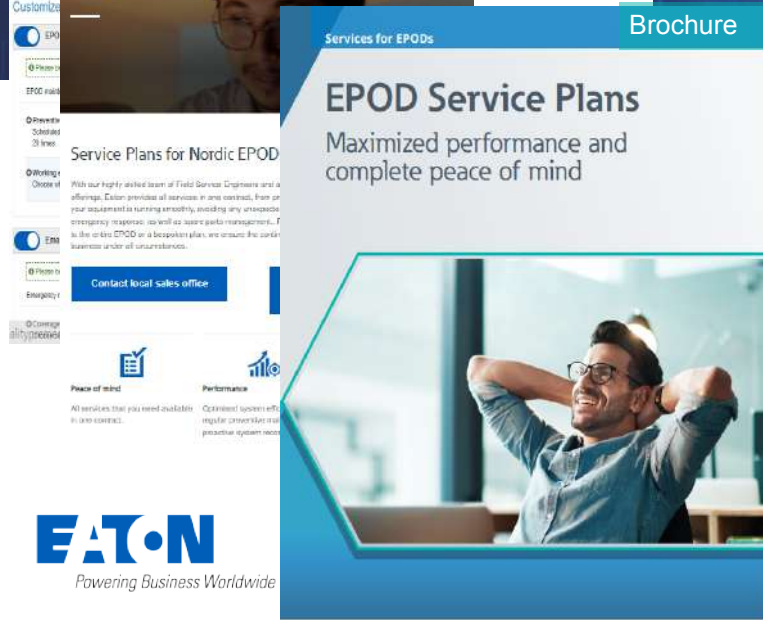
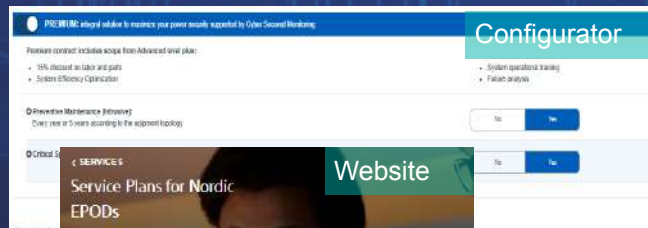


Quality
system data

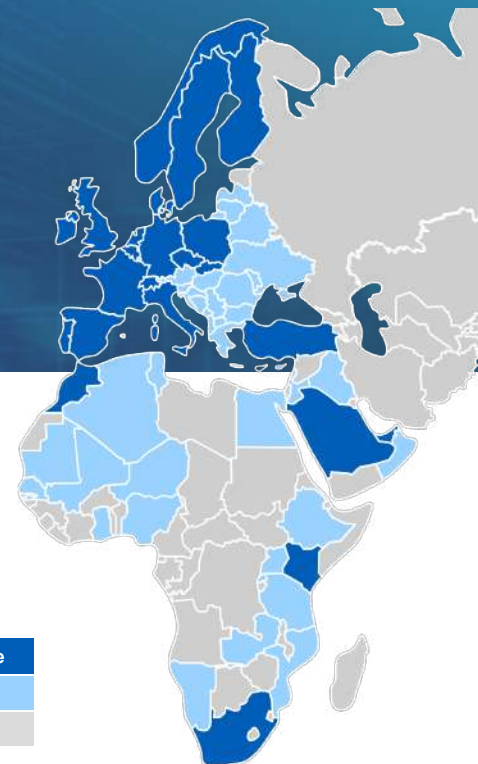


Deployment
data

Eaton's service footprint across EMEA



	1	One Service Organisation 5 business lines
	25+	Country service units
	700+	Service employees
	~100	Authorised Service Partners



Eaton Service Office
Service Partners
Limited Service



Embedded sustainability

Reduce carbon emissions and help operators become good grid citizens

Grid interactive functionality



EnergyAware™ UPS supports the load and the grid, using and buffering stored energy

SF₆ free pioneers



We are the original SF₆-free switchgear manufacturer avoiding this dangerous gas **since 1960.**

Eco passport

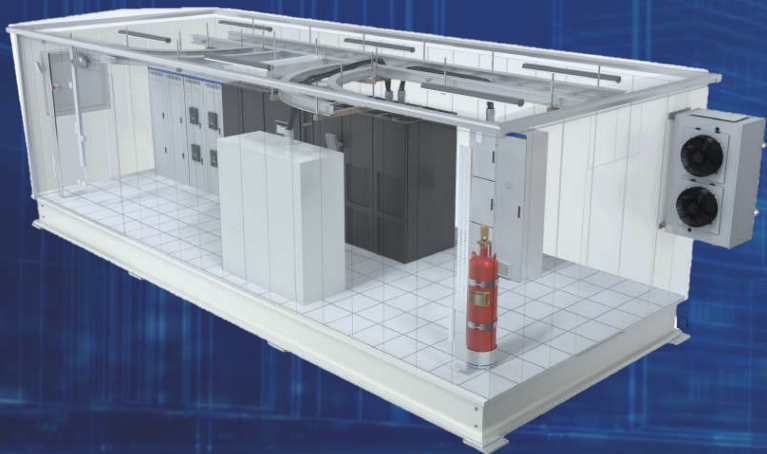


We have over 300 products registered with the PEP ecopassport® program

Manufacturing facilities



Improve energy efficiency and reduce waste and emissions for faster, cleaner deployment



Rapid deployment up to 40% faster



Pay-as-you-grow scalability



Flexible designs up to 3.1MW



Control and traceability in real time
for the entire life-cycle



Embedded sustainability



Would you like to visit
NordicEPOD factory or even have a technical workshop?



Marcelo Pizzato

marcelopizzato@eaton.com

+46 730 688 723





Eaton.com/xModular